



PRODUCT CATALOG

2023

Together we can help
Build a Healthy Future



Virtugal, Lda. a company established in Trofa, started its operations in January 2012, mainly engaged in the marketing of medical devices and medicines for human use. However, as a result of its dynamic stance towards the growing needs and requests of the market, Virtugal presents itself as a company specialized in providing solutions in a variety of fields, with a very wide range of products and solutions and a quality standard acknowledged by its major customers.

Taking into account the steady and structured growth of Virtugal, new facilities were built in 2021, with a storage area 4 times larger than the previous one.

Virtugal is a dynamic, young and entrepreneurial company, committed to contributing to the growth of the Portuguese economy. It considers each customer and each product as a possibility to integrate and enhance the well-being and health for its users and to bring about success for the involved parties, as can be seen by its several sales partners.

The excellence of the products marketed by Virtugal rests on a team of highly motivated professionals with sound skills that guarantee the best solutions and support to its customers. Virtugal's vast experience in risk management, negotiation, logistics management and supplier qualification and monitoring allows the company to maintain a high level of profitability and effectiveness.

Following a differentiation strategy, Virtugal created its own brand, VIRTUGAL, which provides greater visibility to the company and is in constant expansion.

Beyond the domestic market, the growing need to respond to developing international markets with strong needs in the area of health, allowed Virtugal to strengthen its focus on internationalization and exports, enabling its sustained growth and expansion of the VIRTUGAL brand.

Together we can help Build a Healthy Future

The Mission

The mission of VIRTUGAL, LDA, is to provide a service of reference, acknowledged nationally and internationally, providing solutions that contribute to excellent results in all fields of action.

The Vision

Finding answers to current and future challenges, contributing to the joint growth of our partners, and continuously increasing the value of the company.

The Values

- **Dedication and commitment** in all activities, in pursuit of full customer satisfaction.
- **Commitment to quality** in all operations in the distribution chain.
- **Professionalism and efficiency** in deadlines and requests, making the most of available resources.
- **Solidarity and credibility**, focusing not only on the customer, but on society in general, fostering solid relationships of added value interaction.

Quality Policy Goals

- Work with **commitment and dedication**;
- **Continuous improvement**, through periodic review of processes, policy, objectives, and goals;
- **Compliance** with legislation and other applicable requirements;
- Build **customer loyalty**;
- **Increase efficiency levels**, ensuring an improved profitability of the company;

Table of Contents

TECHNICAL EQUIPMENT

10	Sutures
10	Hernia Mesh
11	Dressing supplies
12	Adhesives
13	Bandages
15	Compression bandages
17	Syringes
17	Needles
18	I.V. catheter
18	3-way taps
18	Serum System
19	Blood transfusion system
19	Scalpel
19	Oxygen concentrator
20	Blood glucose test strips
20	Lancets
20	Lancing pen
20	Fingertip pulse oximeter
20	Tablet splitter
21	Weekly medication organizer
21	Prosthesis case
21	Wooden tongue depressors
21	Endotracheal tube
22	Foley catheter
23	Central Venous Catheter Kit
23	Needleless Connectors
23	I.V. Cannula
23	Hemodialysis Kit
24	Guidewire
24	Infusion Extensions/Probes
24	Ultrasound Probe Cover
24	Mixed Sterilization Sleeve
25	Urinary devices
25	Condoms
25	Saline solution
26	Vaginal speculum
26	Men's urinals
27	Urine bags
29	Urine collection cup
29	Feces collection cup

28	Vomit bags
28	Vomit bags dispenser
30	Body bags
30	Ultrasound gel
30	Instant cold pack
31	Zinc oxide foam
31	Adhesive remover
32	Expander chamber

INCONTINÊNCIA

36	Disposable adult diaper
36	Disposable nappy
36	Adult diaper underpants
37	Incontinence pads

DISPOSABLE

- 40 Nitrile gloves
- 40 Latex gloves
- 40 Vinyl gloves
- 41 Copolymer gloves
- 41 Latex surgical gloves
- 41 Polyvinyl exam gloves
- 41 Single sheet bed cover paper roll
- 42 Plasticized bed cover roll
- 42 Crepe paper bed cover roll
high-quality single sheet
- 42 Non-woven fabric bed cover roll
- 43 Disposable aprons
- 43 Apron-Smock
- 43 Smocks
- 43 Waterproof smocks
- 44 Visitor smocks
- 44 Protection suit
- 44 Sleeves
- 44 Waterproof bib
- 45 Surgeon cap
- 45 Non-woven fabric cap
- 45 Plastic cap
- 45 Surgical masks
- 46 FFP2/KN95 Masks
- 46 Plastic shoe cover
- 46 Non-woven fabric shoe cover
- 46 Anti-slip non-woven fabric shoe cover

HYGIENE

- 50 Sponges with soap
- 50 Hand-shaped towels with no soap
- 50 Shower gel
- 50 Moisturizing Body Lotion
- 51 Fat cream
- 51 Soap
- 51 Oral cleaning swabs
- 51 Lemon glycerin swabsticks
- 52 Disposable razors
- 52 Promanum Bbraun
- 52 Softaskin Bbraun
- 52 Shaving cream
- 53 Shaving foam
- 53 Shaving Brush
- 53 After shave
- 53 Hair comb
- 54 Hair brush
- 54 Shampoo
- 54 Hair conditioner
- 54 Hair mask
- 55 Hairstyling cream
- 55 Hairstyling wax
- 55 Hairstyling Gel
- 55 Deodorants
- 56 Perfumes
- 56 Toothbrush
- 56 Toothpaste
- 56 Dental floss
- 57 Nail clippers
- 57 Nail file
- 57 Lipstick
- 57 Tweezers
- 58 Talcum powder
- 58 Sanitary pads
- 58 Tampons
- 58 Hair Removal Wax
- 59 Wipes
- 59 Swabs
- 59 Cotton

TEXTILE

62	Sheets
62	Towels
62	Pillows
62	Disposable pajamas
62	Coat
63	Polo shirt
63	T-shirt
63	Shirt
63	Pants

CLEANING

66	Glass Cleaner
66	Multi-Purpose Cleaner
66	Hand dishwashing detergent
66	Machine dishwashing detergent
66	Dishwashing machine rinse aid
67	Grease Remover
67	Bathroom Gel
67	All purpose cleaner
67	Laundry conditioner
67	Laundry detergent

FOOTWEAR

70	Shoes
70	Sneakers
70	Clogs
70	Flip-flops
71	Disposable slippers

ORTHOPEDI

74	Wheelchairs
74	Crutches
74	Shower stretcher
75	Walker
75	Resting chair
75	Revolving stool
75	Anti-sores pillow
76	Resting armchair
76	Resting couch
77	Waterproof anti-sores pillow
77	Elevation cushion
77	Small cervical pillow
77	Lumbar support pillow
77	Anti-sores elbow pad
78	Viscoelastic mattress
78	Mattress cover
78	Wrist immobilizer
78	Anti-sores hospital mattress
79	Electric bed
79	Hydraulic bed
79	Serum stand
79	Step
80	Metal guard
80	Urinal holder
80	Medicine cabinet
80	Hospital cart
81	Medicine cart
81	Single dose cart with drawers
81	Anesthesia cart
82	Dressing, emergency and anesthesia cart
83	Emergency cart
83	Laundry cart
83	Room divider
84	Podiatry chair
84	Cart for 15 large weekly organizers
84	Stainless steel countertops
85	Meal table
85	Tools table
85	Stainless steel support table

DENTISTRY

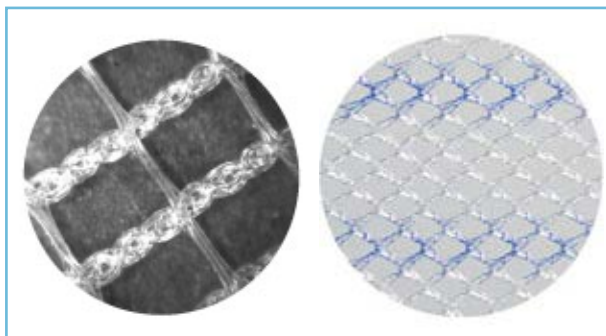
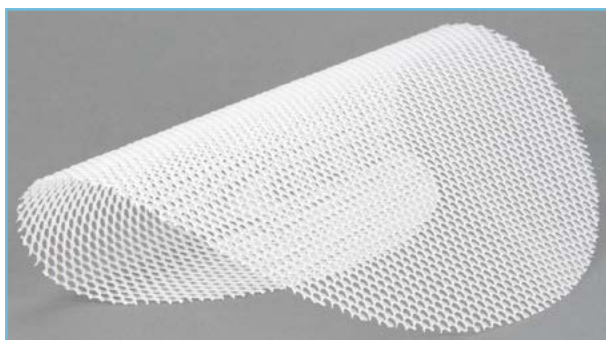
- 88 Scissors
- 88 Probe
- 88 Suction cannula
- 88 Sealant
- 88 Cheek retractors
- 89 Spacer
- 89 Polishing brush
- 89 Flat dental mirror No. 4
- 89 Flat dental mirror No. 5
- 89 Medium spoon
- 89 Dental files
- 90 Carpule syringe
- 90 Curved probe
- 90 Periodontal probe
- 90 Teeth mold

MEASURING DEVICES

- 94 Sphygmomanometer
- 94 Automated blood pressure monitor
- 94 Blood glucose meter
- 94 Thermometers

Technical Equipment





Hernia Mesh

Sterile repair mesh, which will hold the hernia in place, after which the site of the skin where it was inserted will be sutured.

Several models and sizes.

POLYMESH DUAL

POLYMESH INOVA

POLYMESH PLUG E PATCH

POLYMESH COMPOSITE

POLYMESH POLYPROPYLENE

POLYMESH 3D



Premisut sutures

Sterile surgical sutures used to close minor surgical incisions. Absorbable or non-absorbable, mono or multifilament, with or without needle.

Packages of 12 units.

PGA

PGAR

PGLA

PGLAR

PGCL

POLYESTER

NYLON

SILK

POLYPROPYLENE

POLYDIOXANONE

STEEL

Dressing Material

Self-adhesive surgical dressings with absorbents for protecting injuries or wounds, and post-surgical procedures.



WATERPROOF SURGICAL DRESSING - sterile, single use

5cm x 7,5cm	100 un/box - 1200 un/carton
9cm x 10cm	50 un/box - 1200 un/carton
9cm x 15cm	50 un/box - 1200 un/carton
10cm x 20cm	50 un/box - 900 un/carton
10cm x 25cm	50 un/box - 750 un/carton
10cm x 30cm	50 un/box - 750 un/carton



NON-WOVEN FABRIC SURGICAL DRESSING - sterile, single use

7cm x 5cm	100 un/box - 2000 un/carton
8cm x 10cm	50 un/box - 1200 un/carton
10cm x 15cm	50 un/box - 600 un/carton
10cm x 20cm	50 un/box - 600 un/carton
10cm x 25cm	50 un/box - 500 un/carton
10cm x 30cm	50 un/box - 500 un/carton

NON-WOVEN FABRIC SURGICAL DRESSING

7cm x 5cm	50 un/box - 24 un/carton
10cm x 8cm	25 un/box - 30 un/carton
15cm x 8cm	25 un/box - 30 un/carton



Band-Aids

A band-aid made of plastic primarily used to protect surgical incisions or wounds. Individually packaged, sterilized, and for single use. It is a soft dressing, and the absorbent part does not stick to the wounds.

19 x 72mm	100 un/box	10000 un/carton
------------------	------------	-----------------



Eye Patch

Used for eye occlusion or to protect surgical incisions or eye wounds. Individually packaged, sterilized, and for single use. It is soft, with an adhesive border, and does not stick to the injuries.

5,8 x 8,3cm (3,2 x 5cm)	50pcs x 24box	1200 pcs/carton
6,5 x 9,5cm (3,6 x 6cm)	50pcs x 24box	1200 pcs/carton
5 x 7,5cm (3 x 6cm)	50pcs x 24box	1200 pcs/carton

Adhesives

Adhesives for attaching compression bandages, dressings, cannulas, etc. to the skin.



NON-WOVEN FABRIC ADHESIVE ROLL - non-sterile

5cm x 10m	1 rolls/box - 100 un/carton
10cm x 10m	1 rolls/box - 50 un/carton
15cm x 10m	1 rolls/box - 50 un/carton
20cm x 10m	1 rolls /box - 50 un/carton



CLEAR PE ADHESIVE - non-sterile

1,25cm x 9,14m	24 rolls/box - 720 un/carton
2,5cm x 9,14m	12 rolls/box - 360 un/carton
5cm x 9,14m	6 rolls/box - 180 un/carton
7,5cm x 9,14m	6 rolls/box - 180 un/carton

Bandages



Plaster Bandage

A high-strength plaster bandage, suitable for immobilizations that require quick setting. Provides optimal shaping and profitability.

PLASTER BANDAGE

5cm x 3m	1 un/box - 120 un/carton
7,5cm x 3m	1 un/box - 120 un/carton
10cm x 3m	1 un/box - 60 un/carton
15cm x 3m	1 un/box - 60 un/carton
20cm x 3m	1 un/box - 30 un/carton
7,5cm x 2,7m	1 un/box - 120 un/carton
10cm x 2,7m	1 un/box - 60 un/carton
15cm x 2,7m	1 un/box - 60 un/carton
20cm x 2,7m	1 un/box - 30 un/carton

COHESIVE ELASTIC BANDAGE

4cm x 4m	1 un/box - 72 un/carton
6cm x 4m	1 un/box - 72 un/carton
8cm x 4m	1 un/box - 72 un/carton
10cm x 4m	1 un/box - 36 un/carton
12cm x 4m	1 un/box - 26 un/carton



ELASTIC CLIP BANDAGE

8cm x 5m	1 un/box - 250 un/carton
10cm x 5m	1 un/box - 200 un/carton
12cm x 5m	1 un/box - 200 un/carton
15cm x 5m	1 un/box - 100 un/carton



Elastic cotton and polyamide bandage

A low-compression, elastic bandage made of cotton and polyamide fabric, used for non-adhesive fixation, support, and protection.

5cm x 4m	380 un/box
10cm x 4m	220 un/box
15cm x 4m	140 un/box
20cm x 4m	90 un/box

Cambric Bandage

A bleached, cotton cloth bandage used for fixation, as a barrier, for protection, and for absorption of exudates.

5cm x 5m	260 un/box
7cm x 4m	240 un/box
10cm x 4m	160 un/box
15cm x 4m	100 un/box
10cm x 10m	100 un/box

Cloth Bandage

A bleached, cotton bandage used in surgery for support, as a barrier, for protection, and for absorption of exudates.

5cm x 5m	300 un/box
10cm x 5m	200 un/box
15cm x 5m	120 un/box
20cm x 5m	100 un/box
10cm x 10m	120 un/box

Gauze Bandage

Bleached cotton bandage, used for support, fixation and bandaging of body surfaces.

5cm x 5m	300 un/box
7cm x 5m	300 un/box
10cm x 5m	200 un/box
15cm x 5m	160 un/box
10cm x 10m	140 un/box

Crepe Bandage

Medium or high compression, non-adhesive, cotton elastic bandage, used in orthopedics, plastic or general surgery, phlebology and traumatology.

5cm x 4m	250 un/box
10cm x 4m	132 un/box
15cm x 4m	72 un/box
20cm x 4m	60 un/box
10cm x 10m	56 un/box

Compression bandages

Non-woven fabric compression bandages, made out of viscose and polyester, in sterile and non-sterile formats. Characterized by their softness and low abrasiveness. Latex and phthalate free.

Intended for use in non-surgical procedures, to cover and protect wounds, abrasions and superficial lesions. Also used for absorption of superficial body fluids or open field surgery.



STERILE NON-WOVEN FABRIC COMPRESSION BANDAGES - with contrast thread, 2 or 4 layers, packs of 5 compression bandages

20cm x 20cm (10cm x 10cm)	1200 un/box
80cm x 45cm (40cm x 45cm)	110 un/box
80cm x 45cm (40cm x 45cm)	110 un/box

STERILE NON-WOVEN FABRIC COMPRESSION BANDAGES - no contrast thread, 2 or 4 layers, packs of 5 compression bandages

10cm x 10cm (5cm x 5cm)	3000 un/box
15cm x 15cm (7,5cm x 7,5cm)	1900 un/box
20cm x 20cm (10cm x 10cm)	1200 un/box
20cm x 40cm (10cm x 20cm)	400 un/box
30cm x 40cm (20cm x 15cm)	400 un/box
80cm x 40cm (40cm x 20cm)	150 un/box
80cm x 45cm (40cm x 45cm)	110 un/box

NON-WOVEN FABRIC COMPRESSION BANDAGES - no contrast thread, 4 layers, packs of 5 compression bandages, in a dispenser box

10cm x 10cm (5cm x 5cm)	12000 un/box
15cm x 15cm (7,5cm x 7,5cm)	9600 un/box
20cm x 20cm (10cm x 10cm)	5400 un/box

NON-WOVEN FABRIC COMPRESSION BANDAGES - not sterile, no contrast thread, 4 layers, packs of 100 or 200 compression bandages

10cm x 10cm (5cm x 5cm)	9000 un/box
15cm x 15cm (7,5cm x 7,5cm)	3000 un/box
20cm x 20cm (10cm x 10cm)	2400 un/box
20cm x 40cm (10cm x 20cm)	800 un/box
30cm x 40cm (20cm x 15cm)	2800 un/box
80cm x 40cm (40cm x 20cm)	1125 un/box

Hydrophilic cotton gauze cloth compression bandages, in sterile and non-sterile formats. Latex and phthalate free.

Intended for use in surgical and non-surgical procedures, to control the micro-environment of a wound, which may be slight or deep. Also used to protect abrasions and injuries, to absorb superficial body fluids or in open field surgery, and to perform daily healing procedures in the clinical field.



NON-STERILE GAUZE COMPRESSION BANDAGES - with contrast thread, 4 or 8 layers, packs of 50 or 100 compression bandages

20cm x 40cm (10cm x 20cm)	8000 un/box
60cm x 40cm (20cm x 15cm)	2800 un/box
80cm x 80cm (40cm x 20cm)	1100 un/box
1,80cm x 0,48cm (45cm x 45cm)	600 un/box

NON-STERILE GAUZE COMPRESSION BANDAGES - no contrast thread, 4 or 8 layers, packs of 50 or 100 compression bandages

20cm x 15cm (5cm x 5cm)	5000 un/box
30cm x 15cm (7,5cm x 7,5cm)	16000 un/box
20cm x 20cm (10cm x 10cm)	8000 un/box
50cm x 40cm (10cm x 20cm)	4000 un/box
60cm x 40cm (20cm x 15cm)	2800 un/box
80cm x 40cm (30cm x 15cm)	1800 un/box
80cm x 80cm (40cm x 20cm)	1100 un/box
1,80cm x 0,48cm (45cm x 45cm)	600 un/box



STERILE GAUZE COMPRESSION BANDAGES - in a dispenser box, no contrast thread, 8 layers, packs of 1 or 5 compression bandages

20cm x 15cm (5cm x 5cm)	6000 un/box
20cm x 15cm (5cm x 5cm)	12000 un/box
30cm x 15cm (7,5cm x 7,5cm)	4800 un/box
30cm x 15cm (7,5cm x 7,5cm)	9600 un/box
20cm x 20cm (10cm x 10cm)	2700 un/box
20cm x 20cm (10cm x 10cm)	5400 un/box

STERILE GAUZE COMPRESSION BANDAGES - no contrast thread, 4 or 8 layers, packs of 5 compression bandages

20cm x 15cm (5cm x 5cm)	2500 un/box
30cm x 15cm (7,5cm x 7,5cm)	1900 un/box
20cm x 20cm (10cm x 10cm)	1200 un/box
50cm x 40cm (10cm x 20cm)	500 un/box
60cm x 40cm (20cm x 15cm)	350 un/box
80cm x 40cm (30cm x 15cm)	300 un/box
80cm x 80cm (40cm x 20cm)	150 un/box
1,80cm x 0,48cm (45cm x 45cm)	120 un/box

STERILE GAUZE COMPRESSION BANDAGES - with contrast thread, 4 or 8 layers, packs of 5 compression bandages

20cm x 40cm (10cm x 10cm)	1200 un/box
50cm x 40cm (10cm x 20cm)	500 un/box
60cm x 40cm (20cm x 15cm)	350 un/box
80cm x 40cm (30cm x 15cm)	300 un/box
80cm x 80cm (40cm x 20cm)	150 un/box
1,80cm x 0,48cm (45cm x 45cm)	120 un/box



Syringes

Several sizes of syringes, 2 or 3 pieces, with or without needles, sterile.

WITH NEEDLE - single use, sterile, 3 pieces

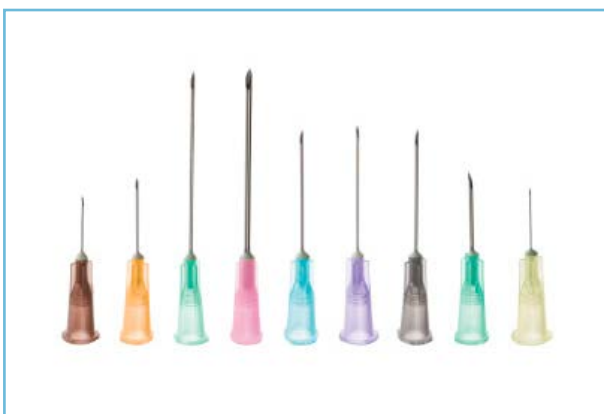
2ml syringe 23Gx1 needle concentric tip	1 un/box - 100 un/box - 3000 un/carton
5ml syringe 21Gx1.5 needle concentric tip	1 un/box - 100 un/box - 2400 un/carton
10ml syringe 21Gx1.5 needle concentric tip	1 un/box - 100 un/box - 1600 un/carton
20ml syringe 21Gx1.5 needle eccentric tip	1 un/box - 50 un/box - 800 un/carton

NO NEEDLE, 2 PIECES - single use, sterile

2ml	1un/box - 100 un/box - 3000 un/carton
5ml	1un/box - 100 un/box - 2400 un/carton
10ml	1un/box - 100 un/box - 1600 un/carton
20ml	1un/box - 50 un/box - 800 un/carton

NO NEEDLE, 3 PIECES - single use, sterile

3ml	1un/box - 100 un/box - 3000 un/carton
5ml	1un/box - 100 un/box - 2400 un/carton
10ml	1un/box - 100 un/box - 1600 un/carton
20ml	1un/box - 50 un/box - 800 un/carton
50ml	1un/box - 25 un/box - 400 un/carton
60ml	1un/box - 25 un/box - 400 un/carton
100ml	1un/box - 25 un/box - 100 un/cartão carton



Needles

Luer needles, stainless steel, sterile, in various sizes and diameters.

LUER NEEDLE - ; single use; 100 un/box and 5000 un/carton

18G x 1.5	23G x 1
19G x 1.5	23G x 1.25
20G x 1.5	24G x 1
21G x 5/8	25G x 1
21G x 1.1	25G x 5/8
21G x 1.5	26G x 0.5
22G x 1.25	27G x 3/4



I.V. Catheter

Thin-walled, radio opaque transparent, pyrogen-free, latex-free, twist-resistant catheter.

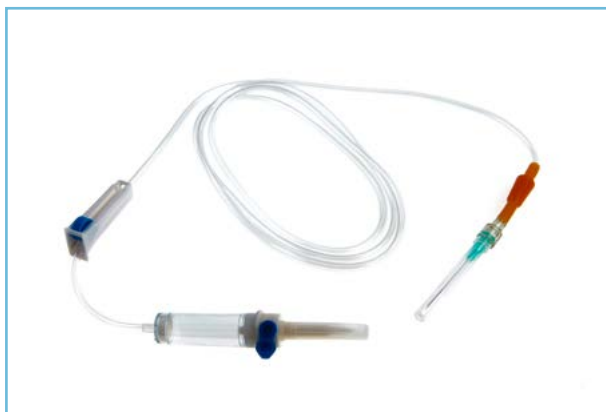
Customized automated tilt technology for lower penetration force. Built-in luer lock connector.

Needle cap to prevent accidental damage to the needle and catheter. Luer 6% cone according to the international standard. Triple point needle for painless insertion. Ideal distance for painless penetration.

Specially designed handles for easy and secure fixation, single use, sterile with option for suture holes.

INTRAVENOUS CATHETER WITH INJECTION VALVE

- 50 un/box - 1000 un/carton;
- Single use, sterile;
- Sizes: 14G, 16G, 18G, 20G, 22G and 24G;



3-way tap

3-way taps are designed to provide an additional infusion opportunity between the line and the venipuncture.

Fully transparent polycarbonate body for flow visualization. 6% Luer taper for compatibility with any international product.

Indication marks with arrows to indicate flow direction.

3-WAY TAP - sterile

50 pieces in an inner box, 20 x 50 = 1000 pieces in a carton

- Rotating dead space for precise management;
- Continuous flow channels;
- Tight caps for all ends;
- 360° rotation allowed;
- Pneumatic and hydrostatic pressure tested above 60 psi;

Serum System

System for gravitational infusion of solutions. 1 un/box, 25 un/bag and 400 un/carton.

DISC FILTER (IV-6-1) 15-20 MM - TUBE Ø 4X3; DISC SIZE NEEDLE 21 PIECES GX1.5" single use, sterilized

Reference	Tube lenght	chamber size	Y-Valve
IVFD400	150cm	6ml	absent
IVFD400Y	180cm	10ml	present
IVFD400Y-SC	180cm	6ml	present



Blood transfusion system

Gravity blood delivery system.

BLOOD TRANSFUSION SYSTEM - single use, sterile

- Tube length - 150 cm
- 1 un/pocket - 250 pc/carton
- The diameter of the liquid thread is 10-100 μm . The diameter of the hole in the filter is 10-200 μm . The effective area of the filter is 24 cm and its filterability rate is not less than 80%.



Scalpel

Disposable scalpel blades with handle. Disposable scalpel blades, scalpel handles, used in minor surgery procedures on soft tissue.

SCALPEL HANDLE

- Sizes 3, 4
- 50 units/carton
- Stainless steel



SCALPEL WITH HANDLE - single use, sterile

- Sizes: 10, 11, 12, 15, 18, 20, 21, 22, 23, 24
- 10 un/internal box - 50 boxes/carton
- Plastic handle with stainless steel blades



SCALPEL WITHOUT HANDLE - single use, sterile

- Sizes: 10, 11, 12, 15, 18, 20, 21, 22, 23, 24
- 1 un/foil - 100 un/carton- 50 un/carton
- Carbon stainless steel



Oxygen Concentrator

Electronically operated 5L oxygen concentrator that delivers a high concentration of oxygen directly to the patient through a nasal cannula.

Intended for individual use at home.

- 5L - 1 un/box



Blood glucose test strips

Blood glucose rapid test strips.

- To use with the blood glucose tester
- 1 bottle with 50 strips and 10000 strips/carton



Lancets

Sterile lancets for capillary puncture.

LANCETS - single use, sterile

- To use in the finger prick pen when measuring blood glucose
- 100 un/internal box - 5000 un/external box - 20.000 un/carton



Lancing pen

Pen for inserting the lancets for capillary puncture.

- 1 un/box - 100 un/carton



Fingertip pulse oximeter

Finger oximeter for non-invasive and accurate measurement of blood oxygen saturation and heart rate.

- 3.6 x 6.1 x 3.2 cm
- Measuring range: 0% to 100% and 30bpm to 250bpm - With batteries
- Non-invasive and accurate measurement of blood oxygen saturation and heart rate.



Tablet splitter

Tablet splitter that allows for cutting the tablet exactly in half, making it easier to swallow or to only take half the dose. Safe and easy to use.

- 8,5 x 3,5 x 2,8 cm
- 30gr
- 1 un/box - 24 un/box - 480 un/carton



Weekly medication organizer

Medicine organizer, with removable transparent compartments, one for each day of the week. For each day there are 4 divisions: morning, afternoon, dinner and evening

• Weekly medicine dispenser, with divisions for 7 days of the week; 1 un/box - 60 un/carton



Prosthesis case

Plastic box for storing oral devices and prosthetics.



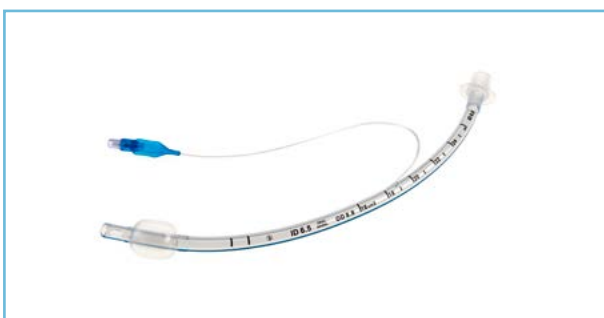
Wooden tongue depressors

Thickness: 1.60 ± 0.20 mm;

Length: 150 ± 2 mm;

Width: 18 ± 1 mm;

- 15 cm
- 100 un/box - 5000 un/carton
- Wood



Endotracheal tube

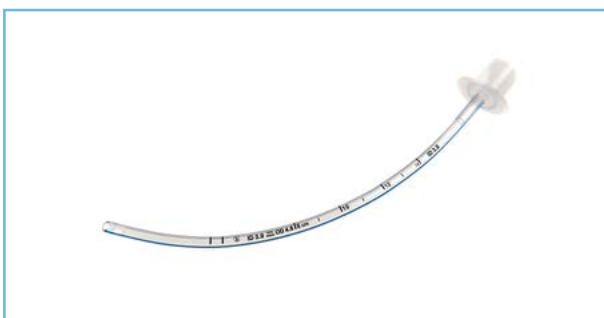
Endotracheal tube for ventilation and routine surgical procedures. Standard nasal or oral use.

Transparent, with opaque Radio line along the length of the tube for X-ray viewing.

With and without cuff.

ENDOTRACHEAL TUBE WITH CUFF

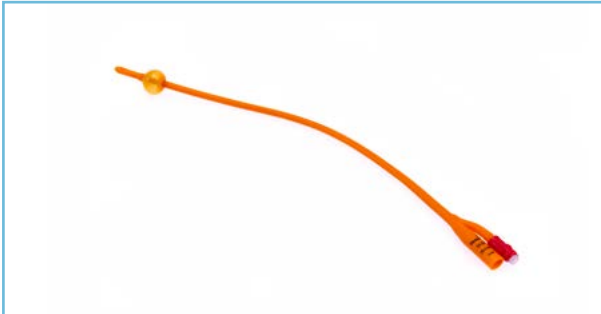
Packed per unit - 10 un/box - 100 un/carton



ENDOTRACHEAL TUBE WITHOUT CUFF

Packed per unit - 10 un/box - 100 un/carton

Foley Catheter



Latex Foley Catheter

Sterile, single-use, flexible foley catheter made of silicone-coated latex. 2 or 3 ways.

Packed per unit. - 10 un/box - 10 un/carton

- 2 ways - sizes: 6,8,10,12,14,16,18,20,22,24,26,28
- 3 ways - sizes: 16,18,20,22,24,26

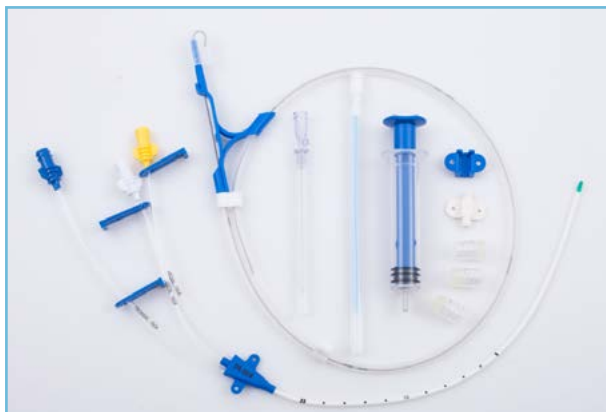


Silicone Foley Catheter

100% silicone foley catheter, sterile, single use, flexible, 2 or 3 ways.

40cm length - Packed per unit. - 10 un/box - 10 un/carton

- 2 ways - sizes: 6,8,10,12,14,16,18,20,22,24,26
- 3 ways - sizes: 16,18,20,22,24,26



Central Venous Catheter Kit

Each CVC kit contains: Central venous catheter, introducer needle, introducer syringe, guidewire with advancement, dilator, injection cap, movable fixation wings.

- With 1, 2, 3, or 4 lumens. Various sizes available.
- Sterile. Single-use.
- 10 units per box and 120 units per carton.



Needleless Connectors

- Sterile. Single-use.
- 100 un/box and 2000 un/carton



I.V. Cannula

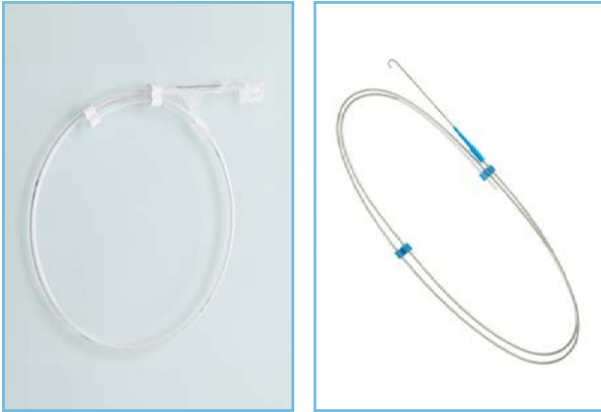
- C annula for intravenous access
- With and without safety feature
- Various sizes available
- Sterile, single-use
- 50 units per box



Hemodialysis Kit

Each hemodialysis kit contains: Hemodialysis catheter, introducer needle, introducer syringe, guidewire with advanced dilator, injection cap, medical dressing, and scalpel.

- Various sizes available
- Sterile. Single-use
- 10 units per box and 80 units per carton.



Guidewire

- Available in Steel, Nitinol, and PTFE
- Straight or J-shaped. With or without safety wire. With or without applicator
- Various sizes available
- Sterile, single-use
- 4000 units per carton.



Infusion Extensions/Probes

- Normal, pressure, or micro-flow type
- Various sizes available
- With or without T-connector
- With or without valve
- Sterile, single-use
- 200 units per carton.



Ultrasound Probe Cover

- Ultrasound Probe Cover
- Latex, Sterile, Single-use - 100 units per box
- Latex, Non-sterile, Single-use - 500 units per box



Mixed Sterilization Sleeve

- Mixed sterilization sleeve with or without bellows
- Various sizes available



Latex Urinary Device

Male external catheter, powdered, disposable, with adhesive fixing strip.

LATEX URINARY DEVICE - 1 un/plastic bag; 50 un/interior box; 1000 un/ carton - single use, non-sterile

Size S	20mm
Size M	25mm
Size L	30mm
Size XL	35mm
Size XXL	40mm



Silicone Urinary Device

Male external catheter, in silicone, non-sterile, disposable, self-adherent.

SILICONE URINARY DEVICE - 1 un/box; 30 un/box - 12 boxes (=360 un)/carton - single use, non-sterile

Size M	28mm
Size L	31mm
Size XL	35mm



Condoms

Lubricated and resistant latex condoms with reservoir.

Natural	individual packaging; 144 un/cx; 7200 un/cartão
Colored	embalagem individual; 144 un/cx; 7200 un/cartão
Extra Strong	embalagem individual; 144 un/cx; 7200 un/cartão
Extra Thin	embalagem individual; 144 un/cx; 7200 un/cartão
Flavored	embalagem individual; 144 un/cx; 7200 un/cartão
Textured	embalagem individual; 144 un/cx; 7200 un/cartão



solution

Sterile saline solution in single doses for nasal and ocular washing.

(NaCl 0,9%) in single doses, sterile

5 ml x 30 units



Vaginal Speculum

Reinforced, anatomical, plastic vaginal speculum. Individually packaged; 100 un/carton.



Men's Urinal

-
- Plastic urinal for men
 - Disposable cellulose urinal for men - 100 un/carton



Urine bags



Sterile bag, in polyethylene, with measurements. It comes with an anti-allergic adhesive.

PEDIATRIC - single use, sterile

- Esp.: $\geq 0.12\text{mm}$; Width: $70\pm 5\text{mm}$; Length: $170\pm 10\text{mm}$
- Individual packaging, sterile bag, 100 un/box; 2000 un/carton



With a measuring scale of 100 ml to 2000 ml. Universal catheter connection. Valve to prevent return of fluids and gases. The lower part contains a cross-shaped outlet with a safety cap. Sterile or non-sterile.

2L BAGS WITH NON-RETURN VALVE AND CROSS-SHAPED OUTLET

1 un/box; 10 un/bag; 250 un/carton

- PVC bag and valve
- Tube length: 90cm
- Tube diameter: 0.65cm



Non-sterile, 2000ml urine collection bag, made of translucent PVC with graduated measuring scale. Translucent tube hermetically sealed in the pouch and equipped with a tapered connector at the end adaptable to the patient's drain.

STANDARD 2L BAGS - 1 un/box - 10 un/bag - 250 un/carton

- PVC bag and valve
- Tube length: 90cm



Non-sterile, 1500ml urine collection bag, made of translucent PVC with graduated measuring scale, with a non-return valve.

1.5L BAGS WITH NON-RETURN VALVE - 1 un/box- 10 un/bag - 250 un/ carton

- PVC bag and valve
- Tube length: 90cm



Non-sterile, 1500ml urine collection bag, made of translucent PVC with graduated measuring scale. Translucent tube hermetically sealed in the pouch and equipped with a tapered connector at the end adaptable to the patient's drain.

STANDARD 1.5L BAGS - 1 un/box - 10 un/bag - 250 un/carton

- PVC bag and valve
- Tube length: 90cm



Incorporates a double plate at the top, acting as a valve to prevent the return of fluids and gases. Translucent tube hermetically sealed in the pouch and equipped with a tapered connector at the end adaptable to the patient's drain.

2L BAGS WITH NON-RETURN VALVE
single use, non-sterile - 10 un/bag; 250 pcs/carton

- 2000ml urine collection bag, made of translucent PVC with a measuring scale of 100 ml to 2000 ml.
- Tube length 90cm



Sterile, urine collection leg bag made of PVC. With non-return valve and bottom outlet valve, universal catheter connection socket. PVC connector and Polyethylene cap.

750ML LEG BAGS - single use, sterile

- Thickness: 0.10mm on the front and 0.10mm on the back
- Bottom outlet: push-pull valve (PVC and PE)
- Tube length: 15cm
- Outside diameter of the tube: 6.5mm
- 1 un. sterile/single bag; 10 uns/multiple bags;
- 250 un/carton



Urine collection cup

120 ml plastic urine collection cup.

- 120ml
- 500 un/cartão



Feces collection cup

30 ml plastic stool collection cup, with spatula.

- 30 ml
- 700 un/carton



Vomit bags

Vomit bags, made of polyethylene, safe and easy to use in hospitals, cars, airplanes, or other situations of nausea.

- Length: 390 ± 10 mm — Opening diameter: 124 ± 4 mm
- 50 un/; 450 un/carton
- polypropylene opening; polyethylene bag; in white



Vomit bags dispenser

Vomit bags dispenser, wall-mounted.

Wall-mounted dispenser

1 un/carton

Body bags

Bags for storing and transporting corpses.



BODY BAGS

- 220 X 80 cm
- 195 gm²
- 1 un/bag; 25 un/carton
- PVC 65% + DOP 35%, white, with a zipper



NON-WOVEN BODY BAGS

- 220 X 80 cm
- 100 gm²
- 1 un/bag; 25 un/carton
- Non-woven PP laminate, white, with a zipper

Ultrasound Gel

Gel especially recommended for use as a contact medium for ultrasound transmission, in ultrasound machines, echographs and dopplers.

- 5L Does not harm the probe; neutral pH. It makes the gel totally harmless to the patient's skin; It has no color, keeping the probe always clean and without bruises; Due to its consistency, it does not drip, facilitating the exam and saving gel;
- It doesn't have any unpleasant smells that usually impregnate the patient's skin; It is not greasy, which makes it easily absorbable by paper napkins, cotton or any other tissue, facilitating its removal after the exam.

HARD PACKAGING



FLEXIBLE PACKAGING





Zinc oxide foam

Zinc oxide foam for the prevention and recovery of irritated skin. Nourishing formula that creates a barrier that soothes, repairs and protects delicate, irritated skin.

125 ml

12 un/carton



Adhesive Remover

Spray adhesive remover, composed of silicone oil. It allows the delicate and painless removal of adhesives attached to the skin, preserving the integrity of even the most delicate of skins, while reducing inflammation.

SPRAY ADHESIVE REMOVER

40 ml

48 un/carton



Instant cold pack

Instant cold pack for simple and immediate external use.

• Single use, non-sterile

Expander chamber

Transparent, antistatic expansion chamber with valve allows inhalation of medication and exhalation through the chamber in one direction only. Universal base, allowing the use of any type and brand of inhaler. Removable and washable chamber.

Transparent 100% silicone masks.



WITH SMALL MASK (0 - 18 MONTHS)

Anatomically shaped face mask for administering aerosol medication to infants.



WITH MEDIUM MASK (1 - 5 YEARS)

A slightly larger mask for administering aerosol medication to children who refuse to inhale the calibrated dose inhalers.



WITH LARGE MASK (5 YEARS +)

Suitable for patients who may struggle with a mouthpiece, or who prefer the security that a mask offers.



NO MASK, WITH MOUTHPIECE (5 YEARS +)

The guidelines advise patients to transition to a product with a mouthpiece as soon as they are able to.



Incontinence





Adult Disposable Diaper

A disposable diaper with high absorption and retention capacity, leaving a dry skin feeling.

Anatomical shape and double re-adjustable adhesive closure for better adaptation.

Full length lateral anti-leakage barrier system. Elastic bands on legs and waist for correct adaptation to the perineal area.

Made of breathable non-woven fabrics. Anti-allergy waterproof material. Moisture indicator.

ADULT DISPOSABLE DIAPER - several absorptions

Size S	25 un/box - 4 boxes/carton
Size M	25 un/box - 4 boxes/carton
Size L	25 un/box - 4 boxes/carton
Size XL	25 un/box - 4 boxes/carton



Disposable Nappy

Single-use absorbent protector with high absorption, retention and protection capacity.

Comfortable, with an absorbent cellulose core, covered with highly filterable non-woven fabric.

Waterproof and anti-allergic outer surface. Perfect adaptation to both beds and wheelchairs or other equipment.

DISPOSABLE NAPPY - several absorptions

60cm x 40cm	30 un/box - 6 boxes/carton
60cm x 60cm	25 un/box - 6 boxes/carton
60cm x 90cm	25 un/box - 6 boxes/carton
80cm x 180cm	25 un/box - 6 boxes/carton



Adult Diaper Underpants

Adult diaper underpants for moderate to severe incontinence, with a cellulose core combined with highly absorbent stitches. Contains a distribution layer, anti-leak barrier, elastic bands, and moisture indicator.

ADULT DIAPER UNDERPANTS - several absorptions

Tamanho S	30 un/box - 2 boxes/carton
Tamanho M	30 un/box - 2 boxes/carton
Tamanho L	30 un/box - 2 boxes/carton
Tamanho XL	30 un/box - 2 boxes/carton



Incontinence Pads

Pads for moderate to severe incontinence. Absorbent core, anti-leakage, anatomical and comfortable, with soft elastic bands.

INCONTINENCE PADS - several absorptions

30cm x 63cm 20 un/box - 5 boxes/carton

37cm x 70cm 20 un/box - 5 boxes/carton

NIGHT-TIME INCONTINENCE PADS

37cm x 70cm 20 un/box - 4 boxes/carton

Disposable





Nitrile Gloves

Powderless nitrile examination gloves, non-sterile, with high strength and quality, soft and flexible, suitable for various needs and requirements.

Recommended for medical use, food, hairdressers, tattoo artists, chemical and mechanical industry, among others.

NITRILE GLOVES - Blue

Powderless blue nitrile gloves; non-sterile; 100 un/box - 20 un/carton; 2gr

Size S

Size M

Size L

Size XL



NITRILE GLOVES - Black

Powderless black nitrile gloves; non-sterile; 100 un/box - 20 un/carton; 3gr

Size S

Size M

Size L

Size XL



Latex gloves

Examination gloves made of hypoallergenic latex, non-sterile, with or without powder. Anatomical, non-slip, resistant and touch-sensitive. With edges, flat shape, and smooth outer surface.

LATEX GLOVES - 100 un/box - 10 box/carton; with or without powder.

Size S

Size M

Size L

Size XL



Vinyl gloves

Powderless, non-sterile, vinyl examination gloves. With edges, textured surface, non-slip, resistant and touch sensitive.

VINYL GLOVES - 100 un/box - 10 box/carton; with or without powder.

Size S

Size M

Size L

Size XL



Copolymer gloves

Powderless transparent copolymer exam gloves, sterile or non-sterile. Excellent touch sensitivity, edgeless grip.

COPOLYMER GLOVES - 100 un/box - 10 box/carton; with or without powder

Size M

Size L



Latex surgical gloves

Latex surgical gloves, sterile, packed in pairs.

LATEX SURGICAL GLOVES - with or without powder; sterile;
With powder: 50 pairs/box - 400 pairs/carton;
Without powder: 50 pairs/box - 250 pairs/carton;

Size 6.0

Size 8.0

Size 6.5

Size 8.5

Size 7.0

Size 9.0

Size 7.5



Polyvinyl exam gloves

Green, powderless, disposable, non-sterile polyvinyl examination gloves. Ambidextrous, narrow fingers, smooth surface, creased cuff. Suitable for the food industry.

POLYVINYL EXAM GLOVES - 100 un/box - 10 boxes/carton;
powderless; non-sterile

Size XS

Size L

Size S

Size XL

Size M



Single sheet bed cover paper roll

SINGLE SHEET BED COVER PAPER ROLL - white; non-sterile; paper
22gr/m²

50 x 50	21 rolls/box
50 x 100	12 rolls/box
50 x 200	8 rolls/box
60 x 50	21 rolls/box
60 x 100	12 rolls/box
60 x 200	8 rolls/box



Plasticized bed cover roll

PLASTICIZED BED COVER ROLL - non-sterile; paper 22gr/m² and plastic 14gr/m²

50 x 40	17 rolls/box
50 x 100	10 rolls/box
50 x 200	3 rolls/box
60 x 100	10 rolls/box

PLASTICIZED BED COVER ROLL - non-sterile; white; paper 39gr/m² and plastic 14gr/m²

50 x 40	12 rolls/box
50 x 100	8 rolls/box
50 x 200	3 rolls/box

PLASTICIZED BED COVER ROLL - green; non-sterile;

50 x 40	17 rolls/box
50 x 100	8 rolls/box



Crepe Paper Bed Cover Roll High-Quality Single Sheet

CREPE PAPER BED COVER ROLL HIGH-QUALITY SINGLE SHEET - white, non-sterile; paper 39gr/m².

50 x 50	15 rolls/box
50 x 100	8 rolls/box
50 x 200	4 rolls/box
60 x 50	15 rolls/box
60 x 100	8 rolls/box
60 x 200	4 rolls/box



Non-woven fabric bed cover roll

NON-WOVEN FABRIC BED COVER ROLL - white, non-sterile; paper 15gr/m².

50 x 50	12 rolls/box
50 x 200	6 rolls/box
60 x 100	10 rolls/box
60 x 200	6 rolls/box



Disposable aprons

Non-sterile, white, embossed, disposable aprons made of 100% high-density polyethylene film (HDPE).

The aprons can be either individually folded or not.

DISPOSABLE APRONS

80 x 125 cm 100 un./box e 1000 un./carton

80 x 125 cm 100 un. individually folded/box and 1000 un./carton



Apron-smock

Blue, non-sterile, 100% chlorinated polyethylene embossed disposable apron-smock.

APRON-SMOCK - 36,5GR; POLYETHYLENE; BLUE; SINGLE USE

one size fits all 1 un./bag; 10 bags/box; 30 box/carton (=300 un)
116 cm



Smocks

Disposable smocks, in 20 or 30gr polypropylene, green or blue, non-sterile, with back and neck ties and elastic cuffs. One size fits all.

SMOCKS - 115 cm one size fits all; 100 un./carton; single use, non-sterile; polypropylene

20 gr green with neck and back strap

30 gr blue with neck and back strap



Waterproof Smocks

Single-use, non-sterile smocks made of 30+15 gr polypropylene, with plastic sheeting on the inside, which makes them completely waterproof.

The smocks have elastic cuffs and neck and back fastening straps.

WATERPROOF SMOCKS - 30+15 gr; 100 un./carton; single-use, non-sterile; polypropylene and plastic inside

width 115 cm blue with neck and back strap



Visitor smocks

Disposable, non-sterile visitor smocks, made of 40gr polypropylene, with front opening, elastic cuff, and a pocket.

SMOCKS - 40 gr; 100 un/carton; single use, non-sterile; polypropylene

width 115 cm

white with front opening



Protection suit

Protective suit made of microporous laminated fabric. Waterproof and anti-static (polyethylene + polypropylene). White, with a hood and zipper.

PROTECTION SUIT - 65 gr; individually packed in a bag, 60 un/box

Size L

Size XL



Sleeves

Non-woven arm sleeves.

SLEEVES - 100 un/box - 1000 un/carton; single use, non-sterile

TNT

Non-woven fabric



Waterproof bib

Adult waterproof bib with fastening straps and waste pouch.

WATERPROOF BIB - 1000 un/box- 10 x 100 un; single use, non-sterile; paper+plastic inside

• 40 x 50 + 12 cm ou 37 x 65 + 12 cm

• 24 gr/m² polyethylene-coated paper

• Fastening straps and waste bag; waterproof and watertight interior



Surgeon cap

Sturdy, breathable, green, polypropylene protective cap with straps.

SURGEON CAP - 20 gr; 100 un/bag - 2500 un/carton; single use, non-sterile

10 x 56 cm Polypropylene Green with straps



Non-woven fabric cap

Disposable, non-sterile, non-woven polypropylene, spunbond cap.

NON-WOVEN FABRIC CAP - 10 gr; 250 un/box - 1000 un/carton; disposable, non-sterile

51 cm Non-woven polypropylene, spunbond white, blue or green



Plastic cap

Plastic, non-sterile, resistant, accordion-type cap, with an elastic band.

PLASTIC CAP - 100 un/box - 2000 un/carton; single use, non-sterile

55 cm Accordion-type



Surgical Masks

Surgical mask type IIR with filtration higher than 98%, made of 3 non-woven fabric layers, and with adjustable nose. Blue, with elastic straps.

SURGICAL MASKS - 50 un/box and 2000 un/carton; single use, non-sterile

9 x 17,5 cm



FFP2/KN95 Masks

FFP2/KN95 mask in hypoallergenic non-woven fabric. White, folded, with no valve and with a nose adjustment.

FFP2/KN95 MASKS - 20 un/box and 1000 un/carton; single use, non-sterile



Plastic shoe cover

Blue, 10 micron polyethylene shoe cover with elastic adjustment strap.

PLASTIC SHOE COVER - 1000 un/box - 10000 un/carton; single use, non-sterile

38 cm

blue, 10 micron polyethylene cover with elastic adjustment strap.



Non-woven fabric shoe cover

Disposable non-woven fabric shoe cover. Green, with elastic adjustment straps.

NON-WOVEN FABRIC SHOE COVER - 40gr; 100 un/box - 2000 un/carton; single use, non-sterile

17 x 40 cm



Anti-slip non-woven fabric shoe cover

Disposable anti-slip non-woven fabric shoe cover, spunbond. Blue, with elastic adjustment straps.

ANTI-SLIP NON-WOVEN FABRIC SHOE COVER - 35gr; 100 un/box and 1000 un/carton; single use, non-sterile

17 x 40 cm

17 x 40 cm non-woven fabric, spunbond, blue, with elastic adjustment straps.



Hygiene





Sponges with soap

Single-use foam soap sponges for daily hygiene.

FOAM SOAP SPONGES - single use, non-sterile

- 12cm wide x 20cm long \pm 5%. Gel sponge between 4 and 4.5 grams
- Pack of 40 sponges.
- 4 pouches with 1000 un/pouch. Box of 4000 sponges.
- GEL: pH.: 5,5 \pm 0,3.
- Dermatological and Hypoallergenic. Bluish green.



Hand-shaped towels with no soap

Disposable dry wash gloves are used for personal care on all parts of the body. Easy to use in hospitals and nursing homes.

Disposable after use. They can also be used to clean work tables and electronic devices.

HAND-SHAPED TOWELS WITH NO SOAP - 50 un/bag and 1000 un/ carton

- 15 x 23 cm, narrow opening; 4.6 grams; Polyester - molton, white



Shower Gel

Dermatological gel for daily body cleansing. Suitable for all skin types. Ideal for effective and moisturizing hygiene in frequent hand washing. Various sizes and models.

1 L

ph: 5,5-6

15 un/box



Moisturizing Body Lotion

Smooths, nourishes and moisturizes the skin instantly and continuously. Contains high-quality emollients and moisturizers and vitamin E that give the emulsion exceptional skin toning and stimulating properties.

- 750 ml with a dispenser
- 15 un/box
- Oil/water type emulsion; Appearance: Light consistency cream;
- Color: White; Scent: Soft floral tone;
- pH: 5,75 \pm 0,25



Fat Cream

Intensive regeneration cream that moisturizes and maintains the skin's elasticity without making it greasy.

1 L with dispenser



Glycerin Soap

Solid, neutral, delicate glycerin soap for all skin types.



Oral cleaning swabs

- Head - 2.5 x 1.5 x 1.5 cm; Stick - 13 cm; Total length - 15.5 cm;
- Individual packaging in a bag sterile bag 250 un/box, 1000 un/carton
- Wavy, blue sponge head and stick made of polypropylene



Lemon glycerin swabsticks

Soft cotton tips for gentle oral lubrication and hydration. Pleasant tasting, sugar-free lemon solution suitable for diabetics.

Soothes and refreshes the dry mouths of patients with restricted oral intake.

3 un/package - 75 un/box - 750 un/carton



Disposable Razors

DISPOSABLE RAZORS - 100 un/box, 12 box/carton (=1200 un); single use, non-sterile

- Double-blade
- Blade thickness: 0.1 mm Handle length: 98.5 ± 0.1 mm
- Blue double-blade stainless steel with plastic (polyethylene) handle



Promanum Bbraun

Alcohol-based solution for hygienic and surgical hand disinfection.

500 ml

1000 ml



Softaskin Bbraun

Recommended for removing dirt and organic matter while protecting the skin thanks to the regenerating action of allantoin. Soothes and restores dry skin, and can also be applied as a shower gel in daily hygiene.

500 ml



Shaving Cream

Lightly scented shaving cream makes shaving easier by smoothing the beard and protecting the most sensitive skin.

Excellent texture that soothes and prevents irritation.



Shaving Foam

Various shaving foam presentations. Prevents irritation or cuts on the skin, allowing a smooth glide of the blades. Protects the face, promoting hydration and softness.



Shaving Brush

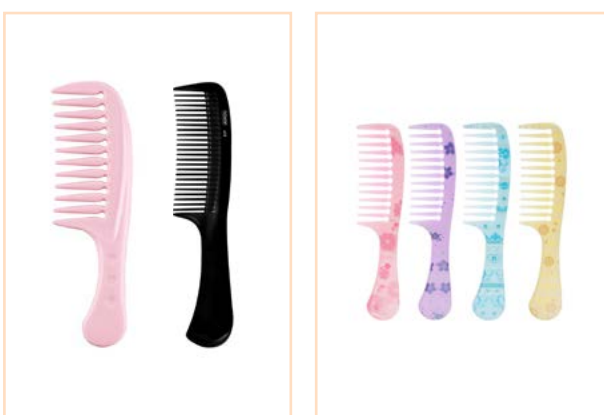
For a traditional shave. With a handle and bristles of various materials. It is used to lather with shaving soap or shaving cream and apply to the face while shaving.



After Shave

Restorative after shave balm with a pleasant texture and delicate fragrance.

Helps soothe sensitive skin caused by shaving and promotes its hydration.



Hair Comb

Various adults' and children's combs, for various hair types.



Hair Brush

Various hairbrushes for adults and children.



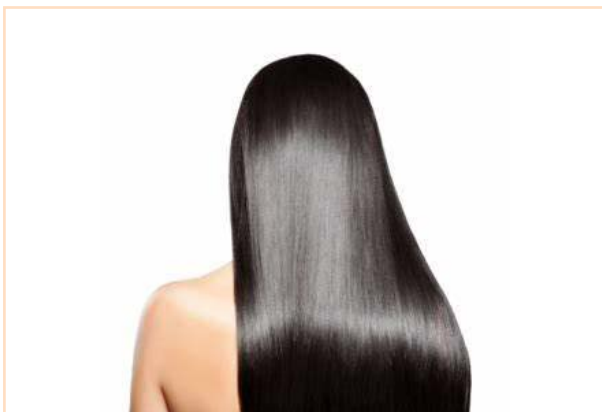
Shampoo

Various shampoo lines for all hair types and specific needs. Available for adults and children

Adult

Child

Various shampoo types



Hair Conditioner

Various hair conditioner lines for all hair types and specific needs. Available for adults and children.

Adult

Child

Various hair conditioner types



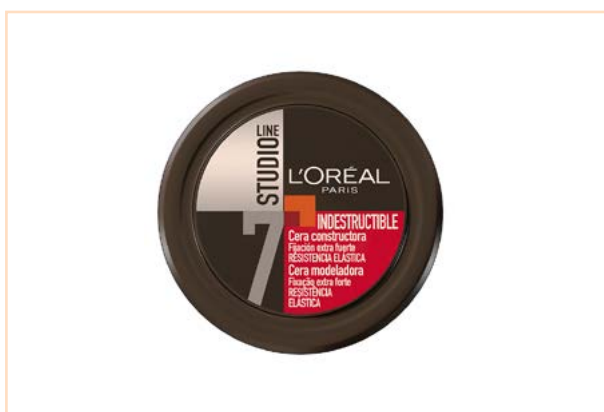
Hair Mask

Mask for all hair types, adults and children.



Hairstyling Cream

Hairstyling Cream for all hair types, adults and children.



Hairstyling Wax

Hairstyling wax, various types of hold.



Hairstyling Gel

Hairstyling gel, various strength levels.



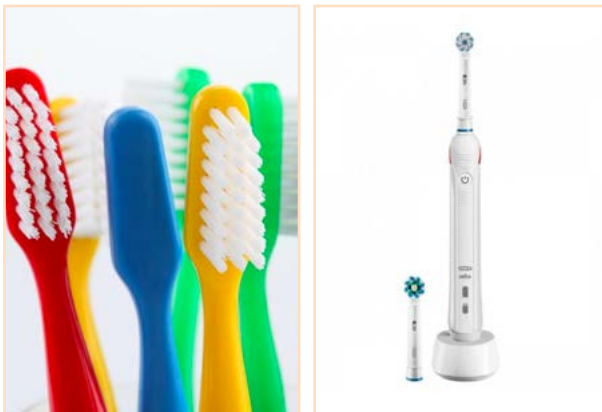
Deodorants

Various spray and roll-on deodorants.



Perfumes

Perfumes for men and women, various sizes and scents.



Toothbrush

Multiple adults and children toothbrushes, soft, medium, and hard.

Multiple electric toothbrushes and refills.



Toothpaste

Various toothpastes for adults and children.



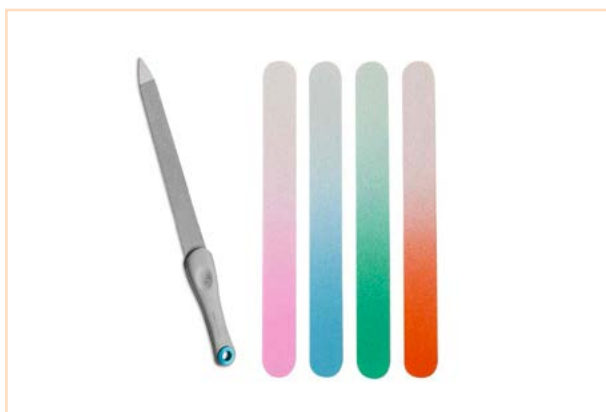
Dental Floss

Dental floss for oral hygiene.



Nail Clippers

Nail Clippers for adults and children.



Nail File

Cardboard or metal nail file for adults and children.



Lipstick

Moisturizing and nourishing lipstick for adults and children.



Tweezers

Hair removal tweezers.



Talcum Powder

Talcum Powder



Sanitary Pads

Sanitary pads with and without handles, for light, moderate or heavy flow.



Tampons

Menstrual tampons in various sizes and for different types of flow.



Hair Removal Wax

Depilatory wax strips or depilatory cream, for face and body

Wax strips

Wax cream



Wipes

Aloe vera cleansing wipes, for the whole body except eyes.

ALOE VERA CLEANSING WIPES

64 wipes/box with dispenser - 12 boxes/carton



Cotton

Cotton ball or zigzag cotton.
Cotton discs.



Swabs

Ear hygiene swabs for adults and children.



Textile





Sheets

Several models and sizes.



Towels

Several models and sizes.



Pillows

Several models and sizes.



Disposable Pajamas

Disposable pajamas, dark blue, short sleeve pants and shirt, 30gr.



Coat

Unisex.
Multiple sizes



Polo Shirt

Unisex.
Multiple sizes



T-Shirt

Unisex.
Multiple sizes



Shirt

Unisex.
Multiple sizes



Pants

Unisex.
Multiple sizes



Cleaning





Glass Cleaner

1 L

5 L



Multi-purpose

1 L



Manual Dishwashing Detergent

750 mL

1,5 L

5 L



Machine dishwashing detergent

5 L

20 L



Dishwashing machine rinse aid Fabric Softener

5 L

20 L



Stain Remover Laundry Detergent

1 L

5 L



Bathroom Gel

1 L

with bleach

1 L

without bleach



All purpose cleaner

1,5 L

5 L



Fabric Softener

1,5 L

2 L

5 L



Laundry Detergent

3 L

Liquid

4 L

Liquid

5 L

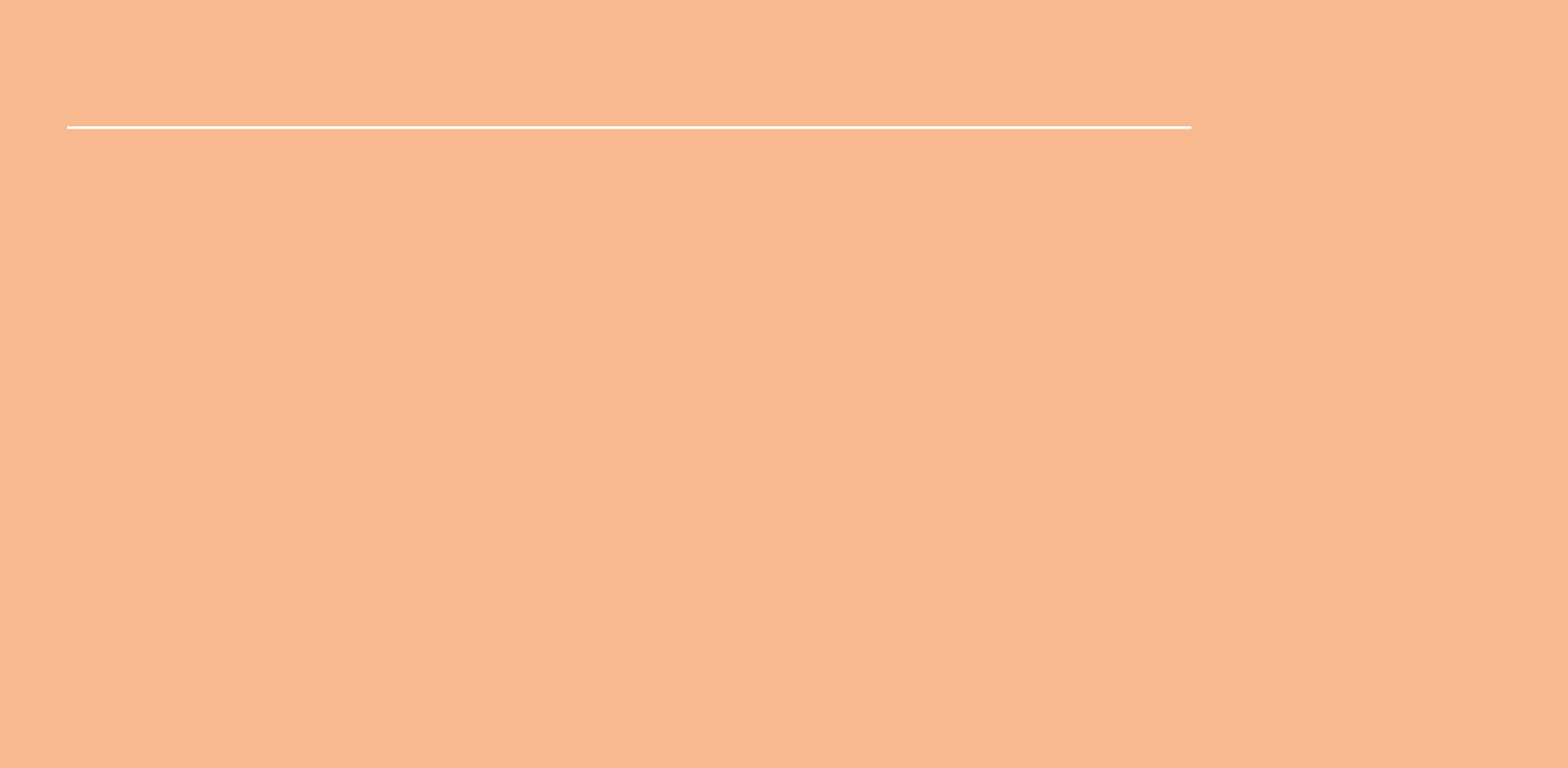
Liquid

11,2 kg

Powder

20 kg

Powder



Footwear





Shoes

Comfortable, anti-fatigue, soft, resistant, slip-resistant, breathable shoes.
Multiple models.



Sneakers

Comfortable, anti-fatigue, soft, resistant, slip-resistant, breathable sneakers.
Multiple models.



Clogs

Multiple models.



Slippers

Multiple models.



Disposable Slippers

Open or closed.

Orthopedics





Wheelchair

Wheelchairs with footrests. Electric or manual. Multiple models.



Crutches

Strong, comfortable aluminum crutches. In black / silver.



Shower stretcher

Hydraulic or electric lifting shower stretcher to support health care assistants in bathing bedridden patients or disabled people.

Padding dimensions: 1950 x 760 mm

Height adjustment: 430 to 840 mm

Maximum load weight: 180 kg

- Welded and galvanized mild steel tube structure;
- Epoxy paint with antibacterial treatment;
- Bed with base in phenolic compact;
- Bathtub in vulcanized canvas with rounded lateral extremities with "V" drainage channel;
- It features a cushion for head support and water drain valve with flexible hose;
- Height elevation by hydraulics or electric motor with battery;
- The hydraulic lifting is done by repeatedly actuating the pedal with greater length.
- When pressing the smaller pedal continuously, the stretcher bed is gently lowered;
- The lifting by electric motor is done by activating a command with two buttons;
- PVC wheels diameter 100mm two with brake and two without brake;
- Folding guards (lateral, headboard and feet);
- Stopper wheels in the four corners;
- Trendelenburg and anti-trendelenburg position via gas damper operated by a lever placed on the side of the stretcher;



Walker

Comfortable and sturdy aluminum walker. Foldable, with seat and bag included.
In red, blue or black.



Resting Chair

Comfortable movable resting chair.



Revolving Stool

REVOLVING STOOL - with height adjustment

- Estrutura em aço/inox soldada;
- Acento em madeira ou espuma com 26 kg/m² com revestimento em napa ignífuga;
- Regulação em altura por meio de fuso ou amortecedor a gás;
- Pintura Epoxy com tratamento antibacteriano.



Anti-Sores Pillow

ANTI-SORES PILLOW

42x42x8cm Recommended for pain/pressure relief from bedsores up to Grade III in the sacrococcygeal and perineal region

Core: Viscoelastic foam
Cover: BLUE Bio-Pruf® waterproof fabric

ANTI-SORES PILLOW

Ø46 Anti-Sores Pillow Bio-Pruf® adjusts to the wheelchair allowing an even distribution of pressure, even while the user is moving. Medical device for pain/pressure relief from bedsores up to Grade II in the sacrococcygeal and perineal region.

Core: Siliconized fibers
Cover: Blue, 100% Polyester, round



Resting Armchair

Articulated structure intended for resting/resting users in the sitting, lying down or semi-lying position (approximately 180°), and can also be used for administering IV fluid or drawing blood.

The height from the seat to the floor is approximately 460mm.

- Structure in round tube $\varnothing 25 \times 1.5$, $\varnothing 32 \times 1.5$ and $\varnothing 25 \times 2$ mm E220 steel, rectangular tube $60 \times 40 \times 1.5$ mm, plates and bars, welded by process manual, with degreasing and phosphating of the surface to be painted with epoxy (references 10.CD.1360 and variants);
- Round tube structure $\varnothing 25 \times 1.5$, $\varnothing 20 \times 1.5$ and $\varnothing 25 \times 2$ mm in E220 steel, rectangular tube $50 \times 20 \times 1.5$ mm and $20 \times 10 \times 1.5$ mm, plates, rods and bars, welded by hand soldering, with degreasing and phosphating of the surface to be painted with epoxy (references 10.CD.1365 and variants);
- Back, seat, and upholstered leg rest composed of epoxy-painted metal structure, lined with flexible 30kg/m³ polyurethane foam covered with PVC-coated polyester and cotton mesh, back and leg rest articulated by gas cushioning, allowing a maximum opening close to 180°, all references;
- Chrome plated, height adjustable armrest (450x60x30mm), and injected polyurethane support;
- Armrest reference 10.CD.1361, painted, adjustable and rotating (230x145mm), with support in nappa for drawing blood, already included in references 10.1360.A.2121 and 10.1360.A.2378;
- All references have a handle on the backrest/back to push the armchair;
- Footrest on references 10.CD.1365 and 10.1365.A.3286;
- Reference 10.1365.A.3286 is designed to support a person weighing up to 200kg;



Resting Couch

Articulated lounge chairs with wheels for convenient resting of patients.

Dimensions when folded: 1645 x 650 x 520 mm

Dimensions while in seated position: 810 x 650 x 1250 mm

- Structure in mild steel tube;
- Epoxy painting;
- Nappa upholstered armchair;
- Simultaneous back and footrest adjustment with gas cushioning;
- Equipped with wheels;
- 3-position adjustable armrest;
- With several accessories: the folding footrest, the IV pole, and the laundry basket.



Anti-Sores Pillow Waterproof

- 55x40x12cm
- Interior: Siliconized fibers Cover: 100% Lyocell (Textile) 100% Polyurethane (Film)
- White



Elevation Cushion

- Multiple dimensions and elevation angles
- Core: A 23 Foam
- Cover: 100% waterproof polyester
- Blue



Small cervical pillow

- Ø10x28cm Interior:
- Siliconized fibers
- Cover: 100% waterproof polyester
- Protection Cover: 100% cotton
- Blue



Lumbar support pillow

- 20x10cm Interior:
- Siliconized fibers
- Exterior/Protection Cover: 100% cotton
- Blue



Anti-sores elbow pad

- 15x20cm
- Interior: 100% Polyester
- White with adjustable velcro



Viscoelastic Mattress

To better distribute the pressure on the support points of the patient's body.

- 190x90x14cm
- Cover: 100% waterproof polyester - Biopruf ®
- Core: 10cm A23 foam (23kg/m³) 4cm D45 viscoelastic foam (45kg/m³)



Mattress cover

- 190x90x12cm
- Device made of Biopruf ® molded so that it can be placed on a foam core, protecting it and preventing cross contamination. Product treated/impregnated with an antimicrobial substance to control the proliferation of bacteria and fungi on the fabric and reduce levels of dust mites and their allergen-carrying feces. Washable and reusable device.
- 100% waterproof Biopruf® polyester



Wrist immobilizer

- 30x9cm (Strap extendable up to 135cm)
- 76% polyester / 24% acrylic
- White, with spring



Anti-sores Hospital Mattress

To better distribute the pressure on the support points of the patient's body.

- 190x90x10cm
- Cover: 100% waterproof polyester - Biopruf ® Core: A23 Foam (23kg/m³)
- Blue



Electric bed

Electric hospital bed with headboard adjustment with or without a face hole.

Padding dimensions: 1850x650mm

Height adjustment: 430 to 980mm

Headboard elevation angle: 70°

- Welded mild steel tube structure;
- Epoxy painting;
- Headboard adjustment system through gas spring;
- Wheels with immobilization system;
- Height adjustment driven by electric motor with foot command;
- Paper roll holder for 50mm rolls;
- Split upholstery with 50mm foam layer;
- Cover in washable fabric made of highly sturdy nappa;
- Facial opening in the headboard upholstery for improved patient comfort.



Hydraulic bed

Hydraulic hospital bed with headboard adjustment with or without a face hole.

Padding dimensions: 1850x650mm

Height adjustment: 430 to 980mm

Headboard elevation angle: 70°

- Welded mild steel tube structure;
- Epoxy paint with antibacterial treatment;
- Headboard adjustment system through a gas spring activated by a lever placed on the headboard;
- Wheels with immobilization system;
- Hydraulic height adjustment with foot lever activation;
- Paper roll holder adjustable for 500mm rolls;
- Split upholstery with 50mm foam layer;
- Cover in washable fabric made of highly sturdy nappa;
- Possibility of having a facial opening in the headboard upholstery for improved patient comfort.



Serum support

Height-adjustable serum stand.

Dimensions: Ø607mm

Height-adjustable: 900 to 1650mm

- Mild steel structure with antibacterial epoxy paint or stainless steel;
- Round base in polyamide with 5 wheels / in stainless steel tube;
- Stainless steel rod with two or four hooks support in polyamide / stainless steel;
- Height-adjustable.



Step

Single or double steps to aid in several tasks.

- Welded steel or stainless steel round tube structure;
- Epoxy paint anti-bacterial surface treatment (in case of steel items);
- Single or double step design;
- Steps in MDF board with anti-slip fabric coating.



Metal Guard

Side guards to incorporate into the bed in order to safeguard the patient from potential falls.
Universal attachment.

Open guard: 1440x515mm
Closed guard: 1810x220mm

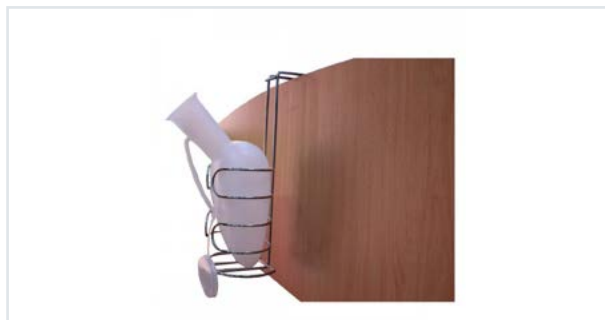
- Mild steel or welded stainless steel structure;
- Ø25x1,5mm tube guard structure;
- The grid is operated with the plastic hinges;
- Epoxy paint surface treatment with antibacterial treatment;
- Structure composed of two units, left and right rails;
- The guards fixing is controlled with a brake system;
- The metal guards are fixed to the bed with M10 handles.



Medicine cabinet

Cabinet designed to keep and store instruments or support material for health professionals, such as medicines or medical instruments.

- Metallic plate structure;
- Epoxy painting;
- Assembly of the glass is done by tightening screws;
- Height-adjustable glass shelves;



Urinal Holder

Structure for holding/supporting a urinal usually placed next to the patient's/user's bed/bedside.

Dimensions: 206x155x326mm

- Steel rod structure of Ø4mm AISI 304 curved stainless steel and Tig manual welding, with polishing;
- Removable holder for inserting 1 urinal (not included).



Hospital Cart

Multi-purpose hospital cart with 5 drawers

With 5 drawers 100mm high;
Overall dimensions: 480x630x850mm

- Stainless steel tube and plate structure;
- Wheels with protective stops;
- The carts have 4 wheels of Ø100mm, two with brakes and two without;
- With transportation handles.



Medicine Cart

Medicine cart with 3 drawers and 3 trays with medication boxes.

Overall dimensions: 480x630x1020mm

- Welded mild steel tubular frame;
- Epoxy paint anti-bacterial surface treatment;
- With 3 drawers, a 165mm bottom drawer and two 100mm drawers;
- With 3 trays with 4 medication boxes each. Each medication box has several compartments;
- Fully extendable drawers and trays;
- Safety lock with key;
- Top cover with a 3-sided rim;
- Wheels with protective stops;
- The carts have 4 wheels of Ø100mm, two with brakes and two without.



Single dose cart with drawers

Structure with wheels and drawers designed for transport and distribution of medication.

SINGLE DOSE CART WITH DRAWERS - In gray

Dimensions: 900x470x1010mm

- Structure composed of polished ST12 steel plate of 0.8mm, 1.25mm and 4mm thickness, Mig manual welding with degreasing and phosphatization of the surface to be painted with epoxy;
- 1 upper small drawer and 1 lower large drawer with individual lock and key;
- White thermo-laminated countertop;
- Base with 4 Ø100mm wheels, 2 of which have brakes.
- Waste bucket included;
- Includes 2 sheet metal cassette holders with individual lock, consisting of 24 boxes each, in clear plastic for single doses and 3 dividers.



Anesthesia Cart

Anesthesia cart for hospital use.

Dimensions: 530x850x1380mm

- Stainless steel tube and polished plate structure;
- With 5 drawers;
- Top cover with a rim;
- With storage boxes;
- Folding shelf in compact phenolic;
- With waste bucket;
- With support for flasks;
- With Ø100mm wheels with protective stops, 2 of which have brakes.



Dressing, emergency and anesthesia cart

Structure with wheels, designed to support dressing/bandaging and health care in a clinical or hospital environment.

- Structure composed of stainless steel tube AISI 304 round Ø25x1,5mm and plate 1 mm thick stainless steel AISI 304, Tig welded by manual process with polishing;
- Stainless and gray structure in the painted frames;
- Structure with central lock to lock/seal the drawers and ready to receive multiple accessories;
- 4 drawers + 1 large drawer in 1mm thick stainless steel plate AISI 304 with epoxy-painted fronts
- Round steel tube handle Ø25x1,5mm AISI 304 stainless steel with polishing
- ABS upper tray;
- Base with 4 protective wheel stops, mounted on 4 Ø125 wheels or 100mm rotating wheels, 2 of which have brakes.

- Structure composed of round steel tube 025x1,5mm ST-34.2 and plate 0,8mm thick steel ST-12 polished, Mig hand welding with degreasing and phosphatization of the surface to be painted with epoxy;
- Stainless and gray structure in the painted frames;
- Structure with central lock to lock/seal the drawers and ready to receive multiple accessories;
- 4 drawers + 1 large drawer of 0.8mm thick ST-12 polished steel sheet with epoxy-painted fronts;
- Round steel tube handle Ø25x1,5mm AISI 304 stainless steel with polishing
- ABS upper tray;
- Base with 4 protective wheel stops, mounted on 4 Ø125 wheels or 100mm rotating wheels, 2 of which have brakes.

Some references may contain doors and drawer fronts in phenolic compact.
Possibility of having anti-static wheels.



Emergency Cart

Emergency cart for hospital use.

Dimensions: 580x850x950mm

- Stainless steel tube and polished plate structure;
- With 5 drawers;
- Top cover in compact phenolic;
- Oxygen bottle holder with fastening strap for bottles up to 5 Lts with several fastening positions;
- Height-adjustable serum stand;
- Height-adjustable rotating support in compact phenolic material with fastening strap for defibrillator;
- Cardiac massage board in the back in compact phenolic;
- With central locking for the 5 drawers;
- With Ø100mm wheels with protective stops, 2 of which have brakes.



Room Divider

Modular hospital room divider with polycarbonate screen.
Rolling screens for easy and practical division of space.

- Mild steel structure;
- Modular panels with mild steel plumb and polycarbonate screen;
- Equipped with 50mm wheels;
- Base structure made up of a rotating base and a starting panel;
- Possibility of increasing or decreasing the number of modules as needed.



Laundry cart

A wheeled structure, with and without a cover, designed for transporting laundry inside buildings/facilities.

- Single or double structure, composed of round tube Ø28x1,5mm and Ø20x1,5mm E220 steel, cover (only Ref. 1 O.CR.1530) in 0,8mm thick steel plate ST12, Mig manual welding; degreasing and phosphating of the surface to be painted with epoxy. Desengorduramento e fosfatação da superfície a pintar a epoxy.
- Single or double structure, composed of round tube Ø28x1,5mm and Ø16x1,5mm AISI 304 stainless steel, cover (only Ref.ª 10.CR.1531) in 1mm thick plate AISI 304 stainless steel, Tig manual welding with polishing; Saco em tela hospitalar revestida a PVC, lavável, fixo ao aro através de abas/alças com molas de pressão;
- Washable PVC-coated hospital bag, fixed to the frame using flaps / straps with pressure springs;
- Dimensions: 440x440x645mm - 120 lt capacity);
- Top with pedal in references 1 O.CR.1530/1
- Base with 4 Ø100mm wheels without brakes and with 4 protection stops.



Podiatry Chair

Electric podiatry chair for observation and treatment.
With simple wheels.

Overall dimensions: 1900X780mm
Height-adjustable seat: 525 to 675mm
Footrest extension: 150mm
Backrest adjustment angle: 0° to 70°
Leg rest adjustment angle: 0° to 90°

- Welded mild steel tube structure;
- Backrest adjustment by gas spring;
- Column height adjustment activated by an electric motor
- Leg rest adjustment angle: 0° to 90° with foot control;
- Leg rests amplitude adjustment via mechanical system;
- Armrests;
- With wheels.



Cart for 15 large weekly organizers

A wheeled structure designed to assist health professionals in dispensing medicines to patients.

CART FOR 15 LARGE WEEKLY ORGANIZERS - In gray

Dimensions: 450x580x1130mm

- Structure composed of steel tube ST34-2 round Ø25x1,5mm and steel plate St-12 polished of 0.8 and 2mm thickness, Mig manual welding with degreasing and phosphatization of the surface to be painted with epoxy;
- 30x30mm R90° aluminum risers and rod;
- Tops and doors in compact phenolic;
- Lock and key doors;
- Base with 4 Ø100mm wheels 2 with brakes and with 4 protection stops;
- Accessories: full week medicine organizer (7 dividers)



Stainless steel countertops

Structure with levelers and countertops designed for placing and preparing materials.

STAINLESS STEEL COUNTERTOPS - With or without sink

- Structure composed of brushed AISI 304 stainless steel tube, square 40x1.5mm and rectangular 30x20x1.5mm, Tig manual welding with polishing;
- 1.5mm thick countertop plate of brushed stainless steel AISI 304, bent and with Tig manual welding and polishing;
- Base stands on 4 legs with levelers;
- Stainless steel 400x400x200 sink.



Meal Table

Adjustable bedside table.

Dimensions: 420x620mm
Height adjustment: 750 to 1150mm

- Welded steel structure;
- This structure can be disassembled for easy transport and storage;
- U-shaped base that allows it to fit on bedside tables, freeing up useful space in the bedroom;
- Adjustable height structure between 750 and 1150mm;
- Reclining top with fixation in several positions;
- Secondary fixed top to support small objects.



Tools Table

A wheeled structure designed to place and prepare instruments, serving as a support for surgeries and treatments for patients.

Dimensions: 750x520mm 750 to 1300mm

- Structure composed of steel tube E220 Ø20x1.5mm, Ø28x1.5mm, Ø38x1.5mm and stainless steel tube AISI 304 028x1.5mm Mig/Tig manual welding, with degreasing and phosphating of the surface to be painted with epoxy;
- Non-removable top in AISI 304 stainless steel plate cut and laser perforated (690x463x1mm) with polishing, metallic railing all around the top;
- Base resting on 3 metal rotating wheels without brakes;
- 1200x540x16mm.

Dimensions: 710x480mm 750 to 1250mm

- Removable tray (450x680x15mm) composed of 1mm thick AISI 304 stainless steel plate, laser cut, welded, and polished;
- Base in stainless steel tube AISI 304 028x1,5mm and square 15x1,5mm Tig manual welding with polishing;
- Height adjustment through a pedal that activates the hydraulics;
- Base resting on 4 plastic wheels, 2 of which have brakes.



Stainless Steel Support Table

Stainless steel table with countertop and undercounter with 2 drawers, used for support.

Dimensions: 600x400x800mm

- Polished stainless steel tube structure;
- Countertop with rails and undercounter in polished stainless steel plate;
- With Ø75mm wheels, 2 of which have brakes;
- Painted drawer front.



Dentistry Equipment





Scissors

Surgical scissors for gums.

12cm

Straight tip



Probe

Probe for inspecting tooth structure.

Anatomic handle

Straight probe



Suction Cannula

Surgical suction cannulas.

SUCTION CANNULAS - 10 un/box

- Diameter: 16mm
- Length: 114mm
- Autoclavable up to 135°



Sealant

Dental fissure sealant.

SEALANT - 2gr

- Light-curing, resin-based, fluid sealant;
- Fluorescent for better control under ultraviolet light;
- Good wear resistance;
- Natural tooth surface sealant;
- Composite restoration margin sealant.



Cheek Retractors

Lateral cheek retractor with long handle for a clear working area. Autoclavable. Useful and convenient for the patient.

- Adults and children



Spacer

Spacer for root canal preparation.

- Blister of 6 pieces
- Stainless steel;
- Length of tapered section, 16mm;
- Working length, 25mm;
- With silicone stoppers.



Polishing Brush

Nail Clippers for adults and children.

- 10 un/box



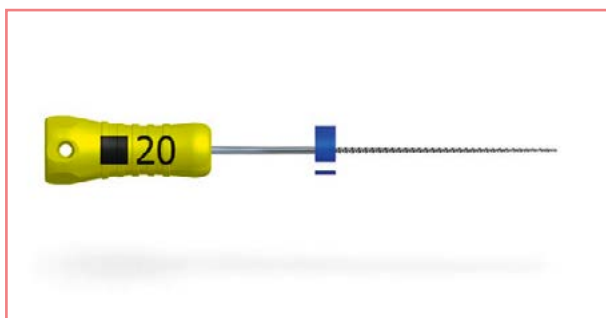
Flat Dental Mirrors N°4 / N°5

- Diameter: 22mm
- 12 un/box



Medium Spoon

Spoon recommended for vertical condensation in diameters compatible with the channel.



Dental Files

Preparation instruments with a high flexibility and cutting ability for endodontic treatments. Atraumatic tips.

- 6 un/box



Carpule Syringe

Recommended as an aid in the application of dental anesthesia.

With suction

Stainless steel;

Without suction

Autoclavable;



Curved Probe

Anatomic probe with stainless handle.

Curve No. 23 Weight: 21.00 gr

5 un/box



Periodontal Probe

Calibrated probe for periodontics. Permanent laser marking, anti-glare and with maximum resistance tips, to avoid possible ruptures.

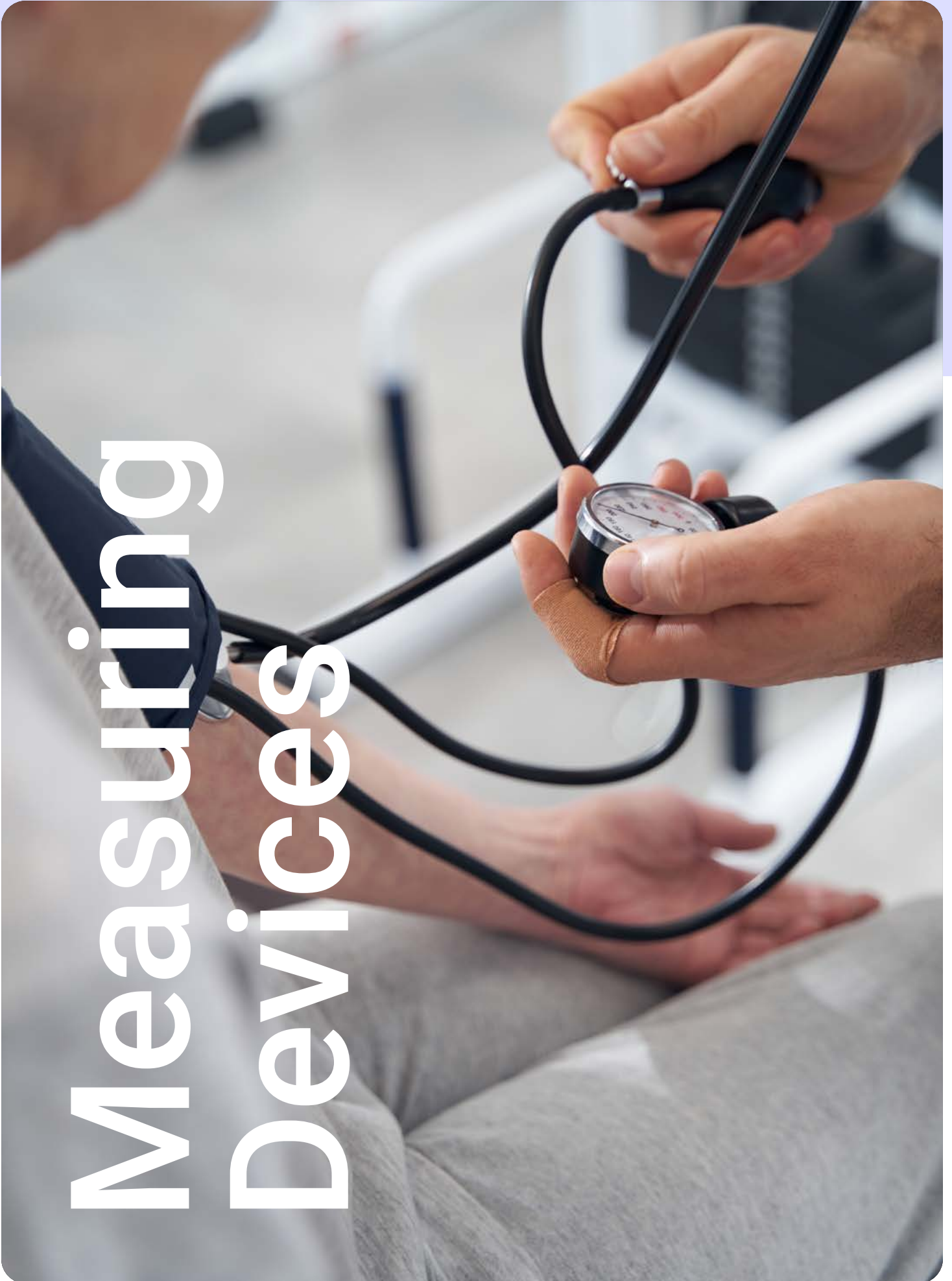


Teeth Mold

Perforated teeth mold without edges in stainless steel.



Measuring Devices





Sphygmomanometer

ANEROID SPHYGMOMANOMETER WITH STETHOSCOPE - 1 un/box and 20 un/carton

- Sleeve length: 50cm



Automated blood pressure monitor

Fully automated, electronic, arm blood pressure monitor.



Blood glucose meter

Blood glucose meter with pouch and pen.

Thermometers



DIGITAL THERMOMETER - 1 un/box, 20 un/exterior box, 200 un/carton; rigid or flexible tip

- Able to measure between 32 and 42°C, sound alarm after 4sec. of measuring. Batteries included.



INFRARED THERMOMETER - 1 un/box and 50 un/carton

- Infrared, front, alarm sound and memory





PRODUCT CATALOG
2023